

BB 89 145 mm 1-Stage DC | 612 089

Blower ByPass Brushless

- » BLDC Blower / Electronically Commutated
- » Onboard drive control
- » Closed-Loop speed control
- » Aerodynamically optimized impeller and housing
- » Onboard calibration potentiometer
- » Robust aluminium housing and impeller



Data		24 V	48 V
Nominal voltage	VDC	24	48
Fan housing diameter	mm	145	145
Fan stages	n°	1	1
Max. airflow	m³/h	319	275
Max. pressure	kPa	5.4	5
Max. vacuum	kPa	5.1	4.7
Input power	W	600	600
Current	A	20	8
Max. speed	rpm	17500	17500
Weight	Kg	2.7	2.7
Standard Features			
Speed command input	VDC	0-10	0-10
Tach output	ppr	2	2

Options

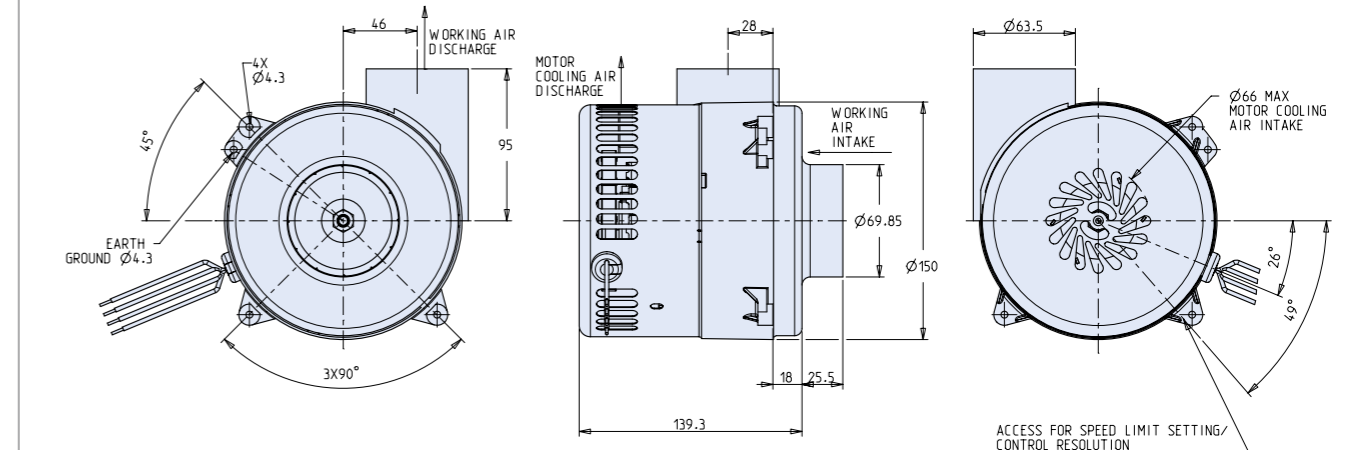
- A) Mechanical
 - » Enhanced corrosion protection
 - » No inlet tube on working air
 - » Cooling air inlet tube
 - » Various mounting patterns
- B) Electrical / Software
 - » No options available

BB 89 145 mm 1-Stage DC | 612 089

Blower ByPass Brushless



Dimensions in mm



Lead wires	
Colour	Function
Red	VDC
Black	Common
Orange	Speed command
Blue	Tach Output

See page 51 for Mechanical Options

Characteristic diagram

